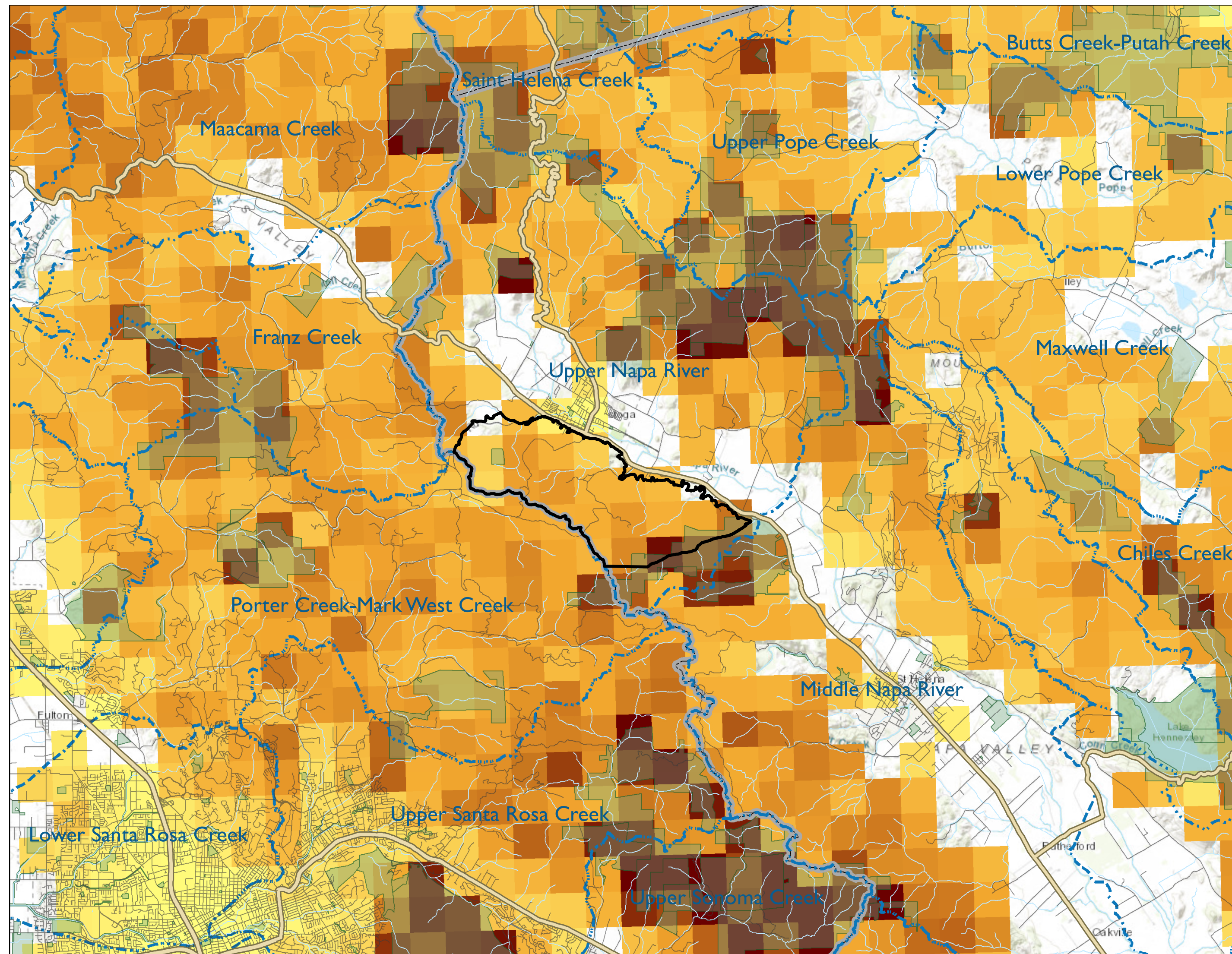
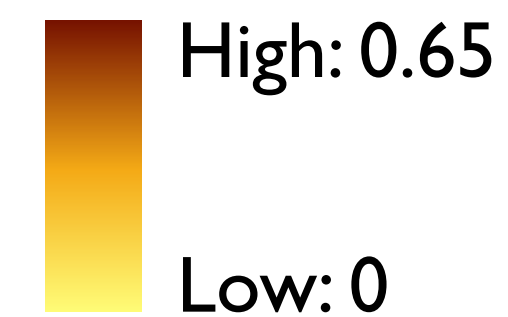


# Fire probability (2001-2050)



Data from the Mann et al. 2016 fire probability map, which estimates fire counts for 2001-2050 using a future climate projection (GFDL scenario A2; slightly drier by 2100) and a business as usual housing scenario.

## FIRE PROBABILITY



## BOUNDARIES

- Diamond Mountain AVA
- Watershed boundary (HUC12)
- Protected area

## INFRASTRUCTURE

- County boundary
- Major road
- Street